

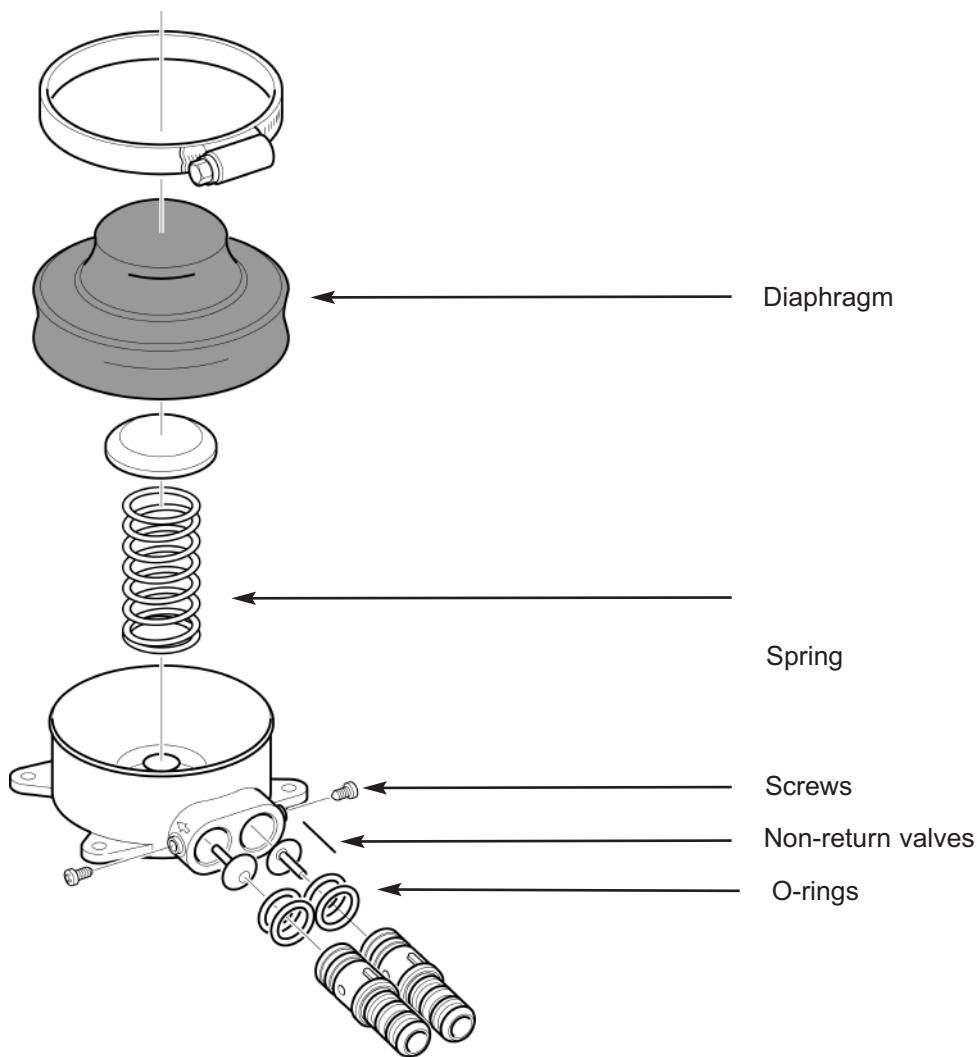


Manual Galley Pump - Foot Operated

Babyfoot

Babyfoot Pump GP4618 - Self-Priming Compact Foot Pump

Note* For product manufactured after July 2003



Accessories

WF1530 Silverised Carbon Water Filter (inline)

Service Kits

AK4615 Serviceable Parts Kit

Qty	Containing
1	Diaphragm neoprene
1	Spring
1	Screw
2	O-ring
4	O-ring
2	Non return valve



AK4615



WF1530