



QUIET FLUSH E2 Marine Toilet



a xylem brand



Ready for When Nature Calls

From crowded charter boats to racing yachts and everything in between, the Jabsco Quiet Flush E2 has been designed to solve some of the biggest marine waste challenges facing boat owners and manufacturers. With its simplified installation, ease of serviceability and sleek touch sensor control, the Quiet Flush E2 brings a whole new level of convenience and comfort onto the water.





**EASY 2
INSTALL**

The Quiet Flush E2 gives even the occasional boater the confidence to install this toilet. For maximum flexibility in tight spaces, the rotating base allows you to install the pump with the discharge to the left, right or rear.

**EASY 2
SERVICE**

Designed for recreational craft but built to withstand the abuse of commercial use, the quick-release system provides easy access to the macerator pump and discharge hose with no tools needed.

**EASY 2
OPERATE**

Marine toilets bring the comfort of home with you, but there are additional considerations on a boat, which is why the Quiet Flush E2 puts you in complete control. With its sleek touch sensor panel, you can choose three settings – including a water-saving, eco flush cycle.

Setting the Standard for Rugged, Reliable Performance

Whether sailing, fishing, cruising or just spending time on the water, the boating lifestyle has so much to offer, which is why the Jabsco Quiet Flush E2 comes with all the functionality needed to make life on board as comfortable and easy as possible.

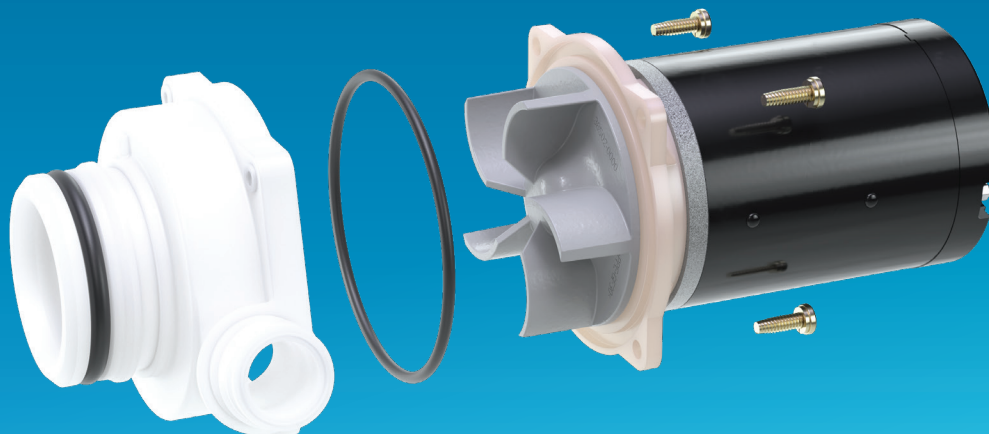


Quiet soft-close seat on regular bowls

Compact or regular bowl sizes

Fresh or raw water rinse models

Easy-to-clean shroud



Powerful but quiet centrifugal discharge pump



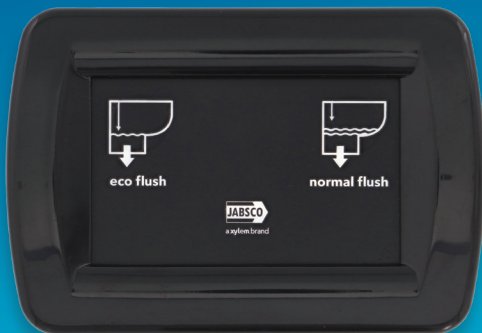
INSTALLATION

- Base can be rotated to left, right or rear of bowl to suit multiple installation options.
- Discharge pump can be rotated 180° to suit base orientation and ensure pipework is routed to rear of toilet.
- Straight or 90° discharge port for easy install.



QUICK RELEASE FOR EASY SERVICING

- Quick release system allows for fast and easy removal of discharge pump and hose when servicing is necessary.
- C-Clip design releases pump assembly from toilet base without the need for tools, resulting in fast service time.



MULTI-FUNCTION TOUCH PANEL

- Stylish low-profile design
- Touch-sensitive operation
- Eco flush, full flush, or empty functions
- Only 1-Litre (1-Quart) per flush using Eco mode
- Designed for wet room installations
- No spill 'empty' feature to leave bowl dry when boat is in motion

Flushing Options



FOR SEA/LAKE/RIVER WATER FLUSHING

- 12V or 24V 3GPM (11 LPM)
Jabsco Par-Max 3' rinse pump
- 40 mesh in-line strainer
- ½" (15mm) hose barb ports



FOR ONBOARD FRESHWATER FLUSHING

- Solenoid valve
- Quick-connect port fittings
- ½" (15mm) inlet, ¾" (19mm) outlet
- Double check valve for protection against potable water contamination
- Integral mesh filter
- Mountable in any orientation

MODEL NUMBER	BOWL SIZE	SEAT	LID	RINSE TYPE		FLUSH CONTROL SWITCH	VOLTAGE DC	RECOMMENDED FUSE SIZE (AMP)
				WATER	DEVICE			
38045-3092	Compact	Wood	Standard Close	Fresh Water	Solenoid Valve	Touch Panel	12	25
38045-3094	Compact	Wood	Standard Close	Fresh Water	Solenoid Valve	Touch Panel	24	15
38245-3092	Compact	Wood	Standard Close	Raw Water	Rinse Pump	Touch Panel	12	25
38245-3094	Compact	Wood	Standard Close	Raw Water	Rinse Pump	Touch Panel	24	15
38045-4192	Regular	Composite	Slow Close	Fresh Water	Solenoid Valve	Touch Panel	12	25
38045-4194	Regular	Composite	Slow Close	Fresh Water	Solenoid Valve	Touch Panel	24	15
38245-4192	Regular	Composite	Slow Close	Raw Water	Rinse Pump	Touch Panel	12	25
38245-4194	Regular	Composite	Slow Close	Raw Water	Rinse Pump	Touch Panel	24	15

PRODUCT DIMENSIONS	HEIGHT INCHES (mm)	WIDTH INCHES (mm)	DEPTH INCHES (mm)	WEIGHT LBS (kg)
COMPACT MODEL	14.0 (355)	13.9 (352)	16.3 (415)	34.2 (15.5)
REGULAR MODEL	14.4 (365)	14.8 (375)	18.9 (480)	38.6 (17.5)

Xylem |'zīləm|

- 1) The tissue in plants that brings water upward from the roots;
- 2) a leading global water technology company.

We're a global team unified in a common purpose: creating advanced technology solutions to the world's water challenges. Developing new technologies that will improve the way water is used, conserved, and re-used in the future is central to our work. Our products and services move, treat, analyze, monitor and return water to the environment, in public utility, industrial, residential and commercial building services settings. Xylem also provides a leading portfolio of smart metering, network technologies and advanced analytics solutions for water, electric and gas utilities. In more than 150 countries, we have strong, long-standing relationships with customers who know us for our powerful combination of leading product brands and applications expertise with a strong focus on developing comprehensive, sustainable solutions.



For the past 80 years, Jabsco has set the standard in recreational boating for reliability, serviceability, and ease of use. Today, this trusted brand continues that tradition of rugged, reliable marine performance – meeting or exceeding American Boat & Yacht Council (ABYC) and National Marine Manufacturers standards (NMMA).

